

IP Power 9258S / 9258T 9258S+Ping / 9258T + Ping USER MANUAL



IP POWER 9258S/T , 9258S/T+Ping
Firmware Version: V5.13
September , 2019

Warning:

Any changes to this equipment without permission may cause damages to your equipment! This equipment has been proved by CE & FCC to can be prevented from the influence of harmful electronic jamming in normal business use condition.

IMPORTANT NOTICE

1. We have no responsibility for the possible damage caused by improper usage or abnormal working environment.
2. Do not use IP POWER in strong shaking condition.
3. Please contact the dealer If IP POWER works improperly.

Copyright © 2015 All rights reserved. No part of this publication may be reproduced, stored in a retrieval system, or transmitted in any form or by any means, electronic, mechanical, photocopying, recording or otherwise, without the prior written consent of us

All other products mentioned in this document are trademarks of their respective manufactures.

We are exempt from notify any change of our products.

Table of Content

1. INTRODUCTION	3
FEATURE	3
SPECIFICATION	3
2. SPECIFICATION	4
PACKAGE CONTENTS	4
MINIMUM SYSTEM REQUIREMENTS	4
3. INTERFACE DESCRIPTION	5
4. HARDWARE & SOFTWARE INSTALLATION	6
HARDWARE INSTALLATION	6
SOFTWARE INSTALLATION	7
5. INITIAL SETTINGS	7
INITIAL SETTING THROUGH THE ETHERNET	7
6. HARDWARE CONTROL & SETTINGS	10
7. CONTROL & SETTINGS	11
DEVICE NAME & TIME	12
POWER	14
SYSTEM SETTING	17
SETTING OF SOFTWARE SHUT DOWN CONTROLLED PC/ SERVER	23
8. SNMP – MIB TREE	25
9. HTTP COMMAND & TELNET	26
CGI / HTTP COMMANDS	26
a.) <i>Set Power Command</i>	27
b.) <i>Read Power Command</i>	27
c.) <i>Power Delay</i>	27
d.) <i>Read Schedule</i>	28
e.) <i>Setup Schedule</i>	28
f.) <i>Read current value</i>	29
TELNET	29
10. FAQ	31
11. FAQ	28
12. Webpage Customization	28

1. Introduction

IP POWER 9258 is a web controller which can be easily used in the industry field. With the remote network control technology, user can control or query the power supply of equipment. User can do this in any computer connected to the internet or local area network, there is no special program needed, also there is no need to open the external case of the computer. Try to imagine that while traveling in a foreign country, you can control the power supply of your electric equipments, such as a computer, a server, a router, an entrance guard or security / surveillance system directly or use a time schedule comes with the IP POWER 9258. You can remotely control the power switch with any computer connected to the network, which is not only convenient, but it also big saving on the manpower and time.

Feature

1. Built in web server, can be used through the Ethernet or Internet network.
2. Support multiple browser, such as Internet Explore.
3. **Control 4 sets AC outlet equipment at the same time.**
 - * 9258T / T+Ping - Outlet NEMA5-15P
 - * 9258S / S+Ping - Outlet IEC320 - C13.
4. Supported HTTP , TCP/IP , DHCP , **DDNS** , SMTP, SNMP & TELNET .
5. Security passwords identify. Easily installed and can be updated online.
6. Supported RS232 port communication, indicate all kinds of real time state of 9258.
7. Safely designed for high voltage resistance and protection for leakage of electrical currency, using nonflammable material
8. **Network Server reboot** -- can remote control to reboot the power on for the PC or Server at remote site ,
9. **Timer Schedule** -- can pre-set the time schedule to turn power on / off thru Internet / Ethernet.
10. **Support NTP (Network Time Protocol)** - synchronize the time of 9258 to the Internet web address time.
11. **Arrange own webpage design** : Change the user-defined graphics and hyperlinks to customize the web pages by webpage SDK
12. Provide **SDK** for own Software develop and application.
13. **Safety shut down controlled PC/ Server (WINDOWS OS)**
14. **Auto Ping function** : Control On/ Off by Ping setting
(S + Ping & T + Ping model only)

Specification

- * Maximum rated voltage for each 4 outlet: 250V AC, 24V DC
- * Maximum rated currency for each 4 outlet: **(Total) 15A AC/DC,**
- * Maximum rated currency: **(Individual outlet) 6A AC/DC**
- * Action delay: Max 10ms
- * Working temperature: 0~ 50°C

2. Specification

Package contents

* 9258S /S+Ping - For EU / AU / UK



* 9258T / T+Ping - For USA / TW / JP



Option; RJ45 (Cat5) net wire

Option : Power Cable

Minimum System Requirements

- Web Browser like Google Chrome , Firefox & IE
- Network card with RJ45 port & Ethernet HUB or Switcher
- Internet network (Ethernet, ADSL or other ways, depends on whether you need far end control ability or not)

NOTICES:

1. IP Power 9258S: for **220-250V**, please use **power (IN) wire at 10A current**.
Max output current: (total) 10A. Max (individual) 6A.
2. IP Power 9258T: for **100-120V**, please use **power (IN) wire at 15A current**.
Max output current: (total) 15A. Max (individual) 6A.

3. Interface Description


IP Power 9258
Front interface shown below:



From left to the right

1. RESET: self-protect AC reset button. IP Power 9258 can cut off the power supply of outlets automatically if there is a shortcut or current overload. After user having solved the problem, push the **reset** button, the AC power supply will become normal.

2. LED: 4 LED indicator lights. If the LED is on, means the corresponding outlet is power on.
3. RS232 port: provide the power output state and get IP address to re-update if update fails

4. Circle sign  and On & Off: Hardware power ON /OFF setup. Please do o refer page 11 for proper operation.

5. RJ45 Ethernet port: link to the net wire.

Rear interface shown below:

9258S:



9258T:



Port description (from left to the right)

1. 90-240VAC power input port
2. Power switch: the power switch ON /OFF of IP Power 9258.
3. OUT 1- 4: 4 individually switched AC outlets

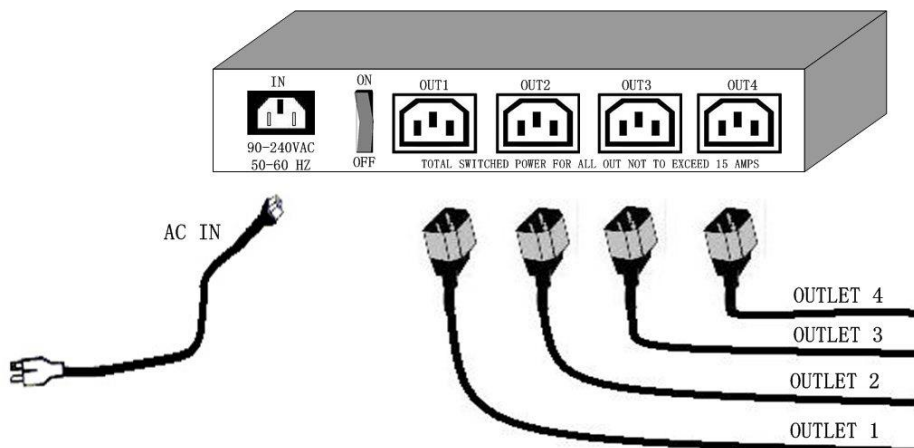
4. Hardware & Software installation

Before you start to use IP Power 9258, please follow the steps below

- Check the package to make sure the contents is complete.
- Prepare one Ethernet HUB or Router
- Check the voltage of the power supply to make sure it is AC 110-240 volt
- Please confirm the specification of your power cable.
 - IP Power 9258S: for **220-250V**, please use the **10A** power cable.
 - IP Power 9258T: for **100-120V**, please use the **15A** power cable.

Hardware installation

- a) Connect the 9258 to HUB through network wire.
- b) Connect the HUB or Router to the internet (either through DSL or Cable modem).
- c) Connect the power adapter to the 9258.
- d) Connect the power adapters of under control electric equipment to corresponding out port of 9258.



Turn on your computer and the power adapter of IP Power 9258

*

For 220-250V, please use power wire can support 10A current.

Max. Output current: (total) 10A, (individual) 6A.

Max. Output current: (total) 15A, (individual) 6A

Software installation

Please follow the steps below to install the software.

1. Insert the Installation CD in the package and windows will auto-run. If not please browse for the Autorun.html file in CD.
2. Click **9258S & 9258T** in the IP POWER section of the installation CD



3. Install IP Family to your desktop or any other place of your choosing
4. After you have saved it onto your desktop it is ready to be used.

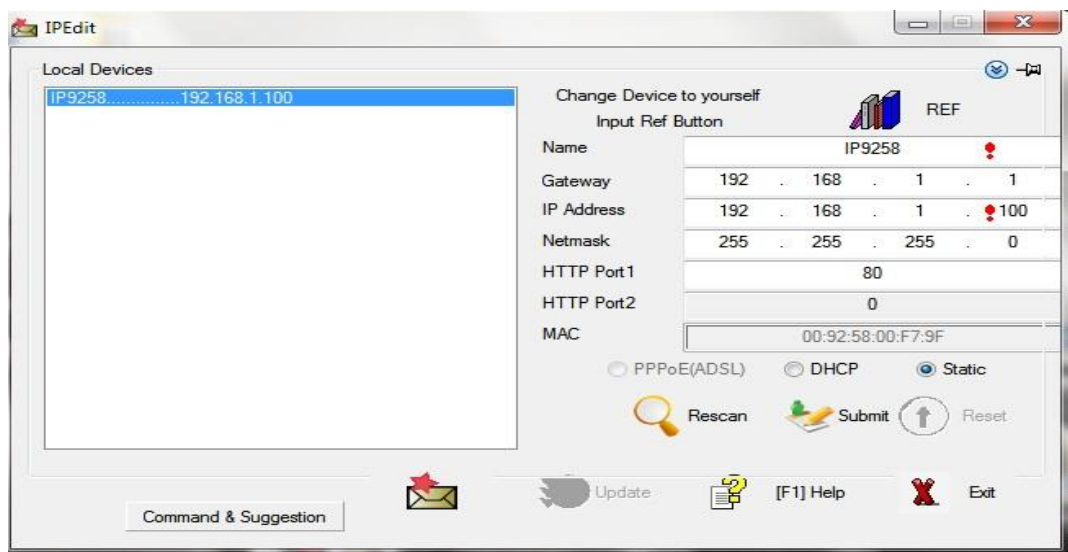
5. Initial Settings

Initial setting through the Ethernet

Open "**IPedit.exe**". Make sure that the IP Power 9258 is properly turned on and there is an ethernet connection connected by a RJ45 cable.



In the local devices section of IPedit all products under the same subnet network will appear. Please refer to below:



IPEDIT will search and display all IP Products 9XXX series under the same local Ethernet. The default name for the IP Power 9258 is **"IP9258"**

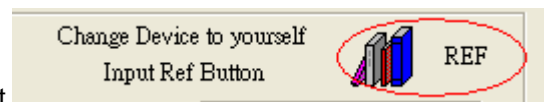
1. Double click and highlight your IP Power 9258 device. The default device name and IP/Network settings will all be displayed on the right hand side of IPedit.

Make sure that the IP Address of your 9258 is setup on the same subnet network as your PC's (Subnet mask, Gateway)

*  Represents that your 9258 does not match the gateway of your router.

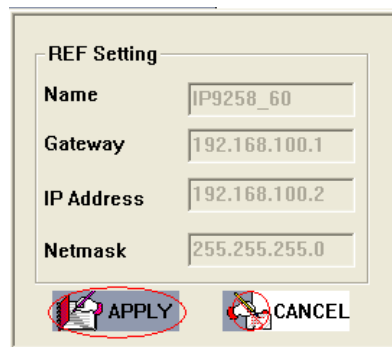
(E.g. If the Default Gateway of your computer is 192.168.1.1 The IP Address of your 9258 will need to be set up to 192.168.1.XXX.)

2a. **Automatically Detect Network settings** (Please go to 2b. for steps on how to manually enter network settings)



a.) Click on the REF button to the right of IPedit

b.) Please wait a few seconds while IPedit detects your network settings. Then click the Apply button to apply the new network settings



2b. **Manually enter network settings In Ipedit:**

a.) You can manually enter the networks settings for the following:

The name: (please use numbers or letter)

Gateway IP: (The default gateways IP can be found using

IP Address: (please set in the same subnet as your PC) in the text windows.

b.) Then click **Submit** after the settings have been selected. Wait about 20 seconds for the new settings to be updated.

c.) Click **Rescan**, and the new device settings will display in text window.

Note:

1.) Make sure the RJ45 network cable is connected and the 9258 is powered on.

2.) * The default IP address of the 9258 is **192.168.1.100**. If you cannot get into the webpage of the 9258, please make sure to set subnet of the IP Power 9258 to match with your PC Subnet Mask.

To obtain the IP information manually:

In Windows Go to:

- a.) Start --> Run --> type in "cmd" --> Hit enter and the MS –DOS window will open,
- b.) Now type in "ipconfig"

```

c:\ C:\WINDOWS\System32\cmd.exe
Microsoft Windows XP [版本 5.1.2600]
(C) Copyright 1985-2001 Microsoft Corp.

C:\Documents and Settings\Chiu>ipconfig

Windows IP Configuration

Ethernet adapter 區域連線:

    Connection-specific DNS Suffix . :
    IP Address. . . . . : 192.168.100.31
    Subnet Mask . . . . . : 255.255.255.0
    Default Gateway . . . . . : 192.168.100.254

C:\Documents and Settings\Chiu>
  
```

The last set of numbers of the IP address can be any number between 1~254, but cannot be same as your PC, hub, router or any device in the network. Please use "IPDdit.exe" to get the IP of IP Power .

* Same **SUBNET**: The first 3 sections of IP address is same - XXX.XXX.XXX.abc. The part of XXX must be the same.

(E.g. If IP address is **192.168.1.100** , then another IP address **192.168.1.123** then these IP Addresses are in same subnet.)

5 .The default username and password of IP Power 9258 are:

Username: admin
Password: 12345678

6. Hardware Control & Settings

* This function teaches you how to use the hardware control the power on/off of the devices

NOTE:

This function is solely used for manually selecting which ports you need to be on or off. It was designed so that you can still have the ability to turn on or off certain ports in the case you do not have Ethernet connection.

Before using the H/W control function, please UNPLUG all the 4 connection or ports connected to the 9258.

Control panel as follow:



To activate Hardware control: Hold the On/Off Button for 5 seconds until you hear one beep which activates the H/W Control function. The LED lights in the front panel should continuously flash and you can hear the relay clicking when activated.

To deactivate Hardware control: Hold the On/Off Button for 5 seconds until you hear one beep which deactivates the H/W Control function.

1. **Left Button** (Circle button): Select power outlet 1 ~4.
2. **Right Button** (ON/ OFF): Turn ON/OFF each outlet.

HARD RESET

To Reset the Device Back to Manufacturer Default:

- a) First Turn off the device wait for 5 seconds , **Press and hold** the two buttons on the panel of the 9258 at the same time. , then power on the 9258
- b) Keep holding until you here 2 short “beep” sounds and one long “beep” sound.
- c) Once the device has been reset refer to the following settings below.



Factory default settings:

It is DHCP – assigned by user`s . If there is no assigned after IP Power boot up , the IP will be fixed at 192.168.1.100

User Name: admin.

Password: 12345678

Device IP Address: 192.168.1.100.

Default Gateway: 192.168.10.1

7. Control & Settings



IP9258 Log In

Please enter user name and password.

User Name:

Password:

To login to the IP Power 9258 device through web browser like google chrome / Internet Explorer, type in the IP Address of your device to log in . This will take you to the IP 9258 Login page.

Default User Name: admin

Default Password: 12345678

Once you have typed in the correct login information click okay and you can start making changes to the web server.

The Control Console : The left side Menu of the Web Interface control the functionality and setup of the IP Power 9258. There are 4 main sections which will be explained in details below.



- **Device name & Time**
- **Power** : Controls , Schedule & Ping.
(Ping function is for 9258S+Ping & 9258T+Ping model only)
- **System** : Setup , DDNS, Email , Password , Network wake up & IP Service.
-
- **Logout**

Device Name & Time

A. Device Name :

This section show the device name & Time. Device name can be change in System → Setup → Device Name . Please change the name in English only and do not use symbol like !@#%\$%^&*()_+ and so on . Click the **SAVE** bottom to save the new name .

Note: The device name can be search by IP Service in IPEDIT to be search easily on Internet . Please refer page 21 for the IP Service function .



B. Time :



In this section, it shows Time at Year – Month – Date Hours : Minutes : Seconds .

User can setup the time manually or press “ local time “ bottom to get the PC `s time .
Or use the time of **Network Time Protocol (NTP)** Server .

NTP function: customer can synchronize the time of 9258 to the Internet web address time.
Please refer following sample list for the IP address of the NTP server :

- * 131.246.9.116
- * 139.18.25.34
- * 128.176.191.9

Note: To work NTP, please do connect to Internet and 9258 will auto connect to NTP server.



1. Save : Save the setting & Disable NTP function .
2. NTP : Enable NTP function.
3. Local time : Use the local time of the controlled PC & Disable NTP function .

Please refer the picture of the NTP page buttons functions :

1. Save : Save the setting & Disable NTP function .

2. NTP : Enable NTP function.

3. Local time : Use the local time of the controlled PC & Disable NTP function .

- **NTP setting procedure :**

Step 1 : Fill the IP of the NTP server and also the time zone . About TIME ZONE : If in JAPAN , please fill 7 in the section . If in Taiwan , please fill 8 .

Press "SAVE " to save the setting

Step 2 : Press " NTP " buttons to enable the NTP function.

Power

With this page the user can control the Power On/Off of the 4 separate outlets manually , setup the delay time manually and group control - control 4 It also includes a timer feature that allows you to delay in seconds when you want the power to activate after you click on apply.

Control: Turns on or off the device connected

Schedule :

Ping : For Ping model only

A. Control

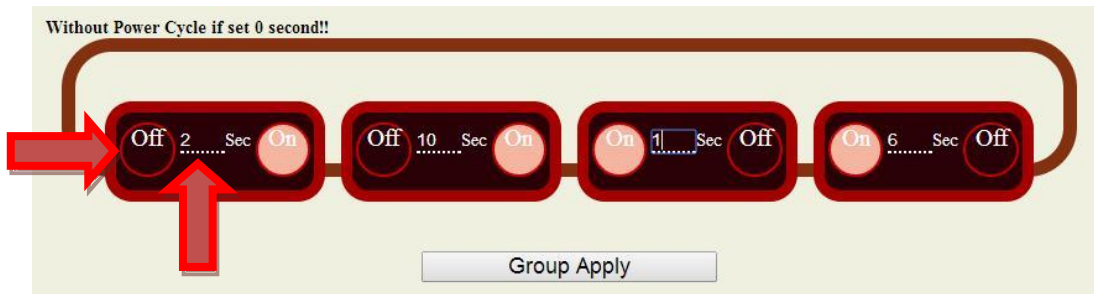
User can do the following 3 basic operation in this page :

A-1 . Manual control each port ON or OFF directly by pressing the power sign.

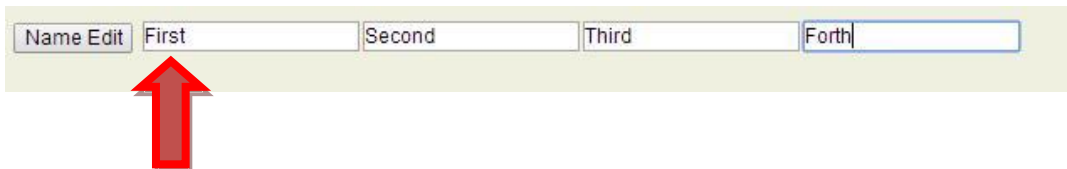


A-2. Power Cycle & Group Setting :

This section allow user to setup the output Reset action and Group control . The cycle time from OFF to ON can be set from 1 to 99 seconds



A-3 Edit the name of each outlets



B. Schedule : Control each power outlets by Schedule:

With the power schedule , the user can setup power daily events to control the devices attached to the 9258

Schedule

Power	Date	Time	Options	Action
Power1	2012 - 03 - 01	00 : 00 : 00	Disable	● ON ● OFF
	2012 - 03 - 01	00 : 00 : 00	Disable	● ON ● OFF
Power2	2012 - 03 - 01	00 : 00 : 00	Just Once	● ON ● OFF
	2012 - 03 - 01	00 : 00 : 00	Every Days	● ON ● OFF
Power3	2012 - 03 - 01	00 : 00 : 00	Work Days	● ON ● OFF
	2012 - 03 - 01	00 : 00 : 00	Weekend	● ON ● OFF
Power4	2012 - 03 - 01	00 : 00 : 00	Mon. & Thu.	● ON ● OFF
	2012 - 03 - 01	00 : 00 : 00	Tue. & Fri.	● ON ● OFF
Power4	2012 - 03 - 01	00 : 00 : 00	Wed. & Sat.	● ON ● OFF
	2012 - 03 - 01	00 : 00 : 00	Disable	● ON ● OFF

SAVE

Support parameter of operate schedule:

- Disable
- Just Once
- Every day
- Work Day: From Monday to Friday.
- Weekend: Saturdays and Sundays
- Monday & Thursday
- Tuesday & Friday
- Wednesday & Saturday

C. Ping Function: *Only Available on the 9258 Ping model

The Ping Function (Only on the 9258 Ping Model) was created to automatically act as a watch dog for the devices attached. If the devices attached to the 9258 does not respond appropriately, the 9258 will restart the device automatically.

Notice: To use Ping function , please do make sure the DNS setting is correct .

Settings

	Power	IP/Host	Failure Times	Before Action	After Action	Repeat	Action
Power1	DISABLE ▼	192.168.1.123	3	3 Sec	3 Sec	Continue ▼	OFF ▼
Power2	DISABLE ▼	www.google.com	3	3 Sec	3 Sec	Continue ▼	OFF ON Reset
Power3	DISABLE ▼	www.yahoo.com	3	3 Sec	3 Sec	Continue ▼	Reset
Power4	DISABLE ▼	123.123.123.123	3	3 Sec	3 Sec	Continue ▼	OFF ▼
Setting							
Ping Interval:	2 Seconds						
Ping EchoWait:	20 Millisecond						
Save							

Enable Settings to Start Pinging device

	Power	IP/Host	Failure Times	Before Action	After Action	Repeat	Action
Power1	ENABLE ▼	192.168.1.123	3	3 Sec	3 Sec	Continue ▼	OFF ▼
Power2	DISABLE ▼	www.google.com	3	3 Sec	3 Sec	Continue ▼	OFF ▼
Power3	DISABLE ▼	www.yahoo.com	3	3 Sec	3 Sec	Continue ▼	OFF ▼
Power4	DISABLE ▼	123.123.123.123	3	3 Sec	3 Sec	Continue ▼	OFF ▼
Setting							
Ping Interval:	2 Seconds						
Ping EchoWait:	20 Millisecond						
Save							

- **Power** : to enable / disable the ping function

- **IP /Host** : Enter the IP Address or Host name of the device that you are trying to ping

- **Failure Times** : The times of Unsuccessful Ping responses.

- **Before Action** : After “Failure Times” reached its setting number, this is the time (second) before the “Action “ execute .

- **After Action** : After the “ Action” execute , this is the number of seconds before the after action occurs.

*Note: This is also known as the PC or Device Startup Time. Set this to number to 90 or above to prevent infinite looping of the device.

- **Repeat** : This is the command to continue ping or to stop ping.

- **Action**: From here you can Reset, On, Off on the device

- **Ping Interval**: The number of seconds between each unsuccessful Ping

- **Ping EchoWait**: The number of Milliseconds that the Ping will wait for a response from connected device

Note:

1. When the Ping function is enabled, it is possible that user may not receive the e-mail sent from 9258 to notify the user, due to the bandwidth limit of the IP Address.
2. Do not use the relay delay switch function when the Ping function is enabled. In the Setup page, the delay switch is not relative with Ping function.

System Setting

There are 6 sections : Setup , DDNS , Email , Password , Network Wakeup & IP Service .



A. Setup – System Configuration

Click on the **Setup** link located on the left hand column. In this page the user will be able to manually enter the **IP Address, Subnet Mask, Default Gateway, DNS, SNMP, TELNET, DHCP, Beeper, Http Command, Switch Interval (Delay Switch), Device name and Version.**

The image shows the "System Setup" configuration page. It contains the following fields and options:

IP Address:	192 . 168 . 100 . 30 . 80
Subnet Mask:	255 . 255 . 255 . 0
Default Gateway:	192 . 168 . 100 . 1
DNS:	168 . 95 . 192 . 1
SNMP	<input checked="" type="radio"/> Enable <input type="radio"/> Disable
TELNET	<input checked="" type="radio"/> Enable <input type="radio"/> Disable
DHCP	<input type="radio"/> Enable <input checked="" type="radio"/> Disable
BEEPER	<input type="radio"/> Enable <input checked="" type="radio"/> Disable
Http Command	<input type="radio"/> Enable <input checked="" type="radio"/> Disable
Switch Interval:	0 Sec ▼
Device Name:	IP9258
Version:	V5.00 2014/08/01

Buttons: Save, Cancel

IP address Settings: Ethernet (LAN) and Internet

- IP Address: please type in the IP address provided by your ISP. If IP Power 9258 is working with a Router, please refer to the network settings of the Router.

- Local Area Network (LAN):

In LAN, you can set a fixed IP address or gain it from a DHCP server automatically. We recommend you use a fixed IP address so you can access the 9258 through the internet. Now type the new IP address in the address field of IE, you can visit the 9258. You also can use the ipedit.exe to find the IP Power 9258 and modify its IP address.

- Work on Internet :

User can set the IP provided by your ISP. If the IP Power 9258 has a public IP address, you can control it through the Internet. IP Sensor 9258 supports fixed IP, DHCP.

- Subnet Mask: please type in the Subnet Mask provided by your ISP. If IP Power 9258 is working with a Router, please refer to the network settings of the Router.
- Default gateway: please type in the Default Gateway provided by your ISP. If IP Power 9258 is working with a Router, please refer to the network settings of the Router.
- DNS Server: please fill in the IP address of DNS server. If you are in Taiwan, you can set it to 168.95.1.1.
- DHCP : Enable— activate DHCP service. DHCP will assign IP address for each PC.
Disable – shut down the DHCP service. You can set the IP address by yourself.
- Beeper: Enable – activate the beeper. Disable – turn off the beeper.
If you control the 9258 through the web page, the beeper will beep once when the operation works.
- Http Command : Setup the control possibility from HTTP command or SDK
 1. Select Enable: To enable Http command & SDK control
 2. Select Disable: To disable Http command & SDK control
- Switch Interval: Support delay 0~120 Seconds to delay the On/Off action as manually control.
- Device Name : User can setup the device name

NOTICE:

1) **IP address format:** XXX.XXX.XXX.XXX:YYYY YYYY means the port number, (I.E 192.168.1.100:2345)

Port ranges from: 1 to 32767

.

2) **Subnet Mask:** Ranges from 0 to 254 (xxx.xxx.xxx.0 ~ xxx.xxx.xxx.254)

3) If **DHCP is disabled**, then the user must set the **TCP Port** and **default Gateway** .If **DHCP is enabled**, then the TCP port will be preset to 80(xxx.xxx.xxx.xxx:80) and the default gateway will be set by the DHCP server.

2.) DDNS Settings

Please refer to page 23 for more details

B. DDNS

When the user connects to the Internet through ADSL (PPPOE Service), the IP address that you receive from ISP is usually a dynamic IP Address. Therefore when someone wants to visit your device they are usually not able to because the IP Address is dynamic and it will keep changing. By using DDNS this problem is solved.

Below we will explain using the DDNS service provided by www.dyndns.com:

1.) First, apply for a domain name (Ex. yourdomain@dyndns.org) in www.dyndns.com for the 9258.

2.) Set the domain password and select the proper DNS server (for example, dnsdojo.net) for domain name resolve.

Then input the Domain Name Server (host name), user name, password, and, etc in the DDNS webpage of 9258.

After you have set every up correctly every time the 9258 start or user selects submit, the 9258 will send a message package including its current IP address, domain name to www.dyndns.com, then the DNS server you choose will link the domain name of 9258 to its current IP address. That way the visitor can visit the 9258 webpage by inputting the domain name of 9258 (abcdefg.dnsdojo.net) in the address column of the browser.

DDNS Setup	
DDNS Server IP:	204.13.248.110:80
Domain Name:	sample.dyndns.info
DDNS Username:	sample
DDNS Password:
DDNS Refresh:	Disable ▼
Proxy:	Disable ▼
<input type="button" value="Save"/> <input type="button" value="UPDATE"/>	

- **DDNS Server IP:** Type in the IP Address and port number provided by www.dyndns.com. Please refer to the figure above for reference.
- **Domain Name :** Please type in the domain name that you have chosen to use.
- **DDNS UserName:** Enter your DDNS User Name here
- **DDNS Password:** Enter your DDNS password here
- **DDNS Refresh = Enable /Disable DDNS:** This setting allows you to enable DDNS or disable. Select True – If you want to enable DDNS and Select False – If you want to disable DDNS
- **Proxy :** If you need to use a proxy Server, Select True – to enable proxy and Select False – to disable proxy.

Note: Once you are done setting up these configuration settings make sure you hit the Save Button and then the Update to confirm completion

C. EMAIL SETUP:

When you finished the e-mail setup , you can set to let IP Power 9258 send its IP address automatically.

Email Setup

SmtServer:	smtp.sample.com
SmtPort:	25
Pop3Server:	pop3.sample.com
Username:	sample
Password:	*****
Sender:	sample@sample.com
Receiver1:	a@sample.com
Receiver2:	b@sample.com
Receiver3:	c@sample.com
Subject:	Sample
Message:	Body <input type="text"/>

To send out mail successfully , please do set the DNS correctly . You can check with your ISP for correct DNS information.

For example:

- * Smt Server : smtp.sample.com
- * Smt Port: 25
- * Pop3Server: pop3.sample.com
- * Username : sample
- * Password: ***** (do not over 8 digits)
- * Sender: Sample@sample.com
- * Receiver 1: a@sample.com
- * Receiver 2: b@sample.com
- * Receiver 3: rc@sample.com
- * Subject: This is the subject line
- * Message : This is the body of the email

- **SmtServer = Mail Server:** Outgoing Mail Server . Please make sure the server is an available mail server.
- **SmtPort** : We suggest to keep port as 25
- **Pop3Server:** Incoming Mail Server. IP address (in Internet WAN) from your ISP for sending Internet IP address by E-mail when 9258 in Internet.To receive IP address in WAN , please fill your ISP e-mail receive server.
- **Username** : please use the name format that the email server inquire (if need the username with words after @)
- **Password:** the password of this mailbox is **no longer than 8 characters**.
- **Sender:** please fill in the name of sender. The Mail Server must support SMTP and these fields must be filled in correctly.
 - **Receiver:** no longer than 50 English letters. Please use blank space to separate two receiver's e-mail address. After you have finished this setting, you will receive the email to inform you the IP address of the IP Power 9258 every time you enter the webpage.
- **Subject:** the subject of the mail to be no more than 50 English letters.

- **Message** : please type the content of the mail here, it cannot be left empty.

After you have finished all of the above settings, click "**SAVE**" and your settings will be saved.

D. Password :

Click the "**Change password**" button on the left to enter the password change page.

User can change it into any password (not longer than 8 bit), then click **apply** button to save the change. To change the password you will need to type in the Old Password first, then enter the new password and finally confirm the new password.

Note : **If forget the password** , Use username "**super user**" when log in webpage and then click "**OK**" turn power off for few second and then turn **ON** power . 9258 will to set back to default password. (There is space between super and user.)

E. Wake on LAN (WOL):

Remote Wake up PC by MAC address in Ethernet (LAN)
Use Network port (RJ45), you can wake PC on WAN by PC `s MAC address.

Wake on LAN (WOL) premise:

- (1) First the main board needs to have Wake on LAN support. There must be a port to connect to your network card. If the motherboard supports WOL , will need to enable this function in the BIOS setting.
- (2) Your network card must also support "WOL", remember to connect your connect cable to Main board or the network card cannot send the "power on" message to your motherboard.

After both the motherboard and network card have been setup, you can use WOL function by following the steps below:

- Step 1: Log in 9258 web page and go to "Network Wakeup"
- Step 2: Type in your MAC address then press "send" – the PC will be power ON.

F. IP Service

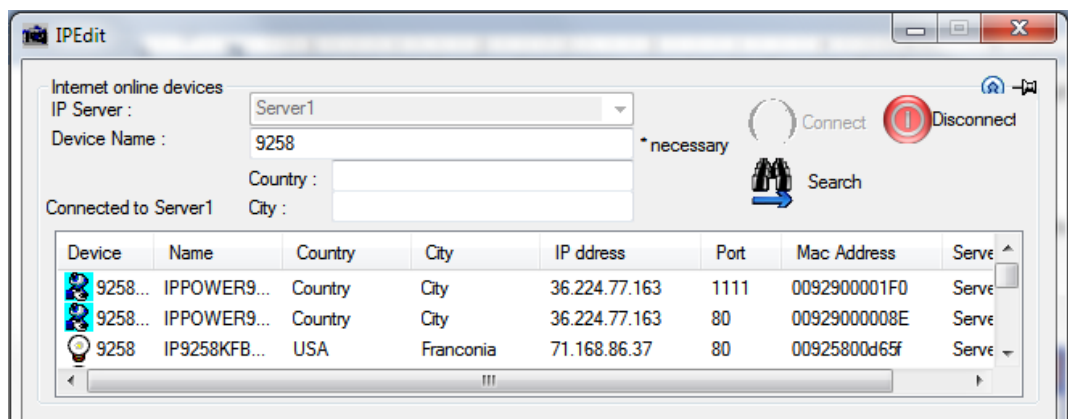
IP Service

Country:	<input type="text"/>
City:	<input type="text"/>
CNT :	Disable ▾ Server1 ▾ (Smart phone direct control)
IP Service :	Disable ▾ Enable Internet Search Tools

IP Server gives the user the ability to easily search for the name of the device other than searching for a long IP number. This flexibility allows the user to easily just remember the name of their device so they can access it with ease.

To Enable IP Server:

Go to **IPSrv Conf** on the Left hand side of the Webpage and then make sure you have **IPSrv On/Off** on **On**. The default IP server IP Address is **220.135.169.136** and provided. The user can also setup his/her own IP Server system and use their own address as well.



By setting the server address in IP server of advanced setup page, the user can easily search for his/her IP Power 9258-1U on internet just by searching for the name of the device. The **default IP address of IP server is 220.135.169.136**.

Step1: Click the green "connect" button

Step2: In the device name section: Type in the name of your device (Min of 3 letters)

Setting of software shut down controlled PC/ Server

9258 can be used to safely turn off the PC/Server through Network. With this feature you can remotely shutdown any PC/ Server which that is connected to the IP Power 9258 through normal

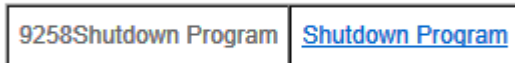
Windows shut down procedure. Before operating the software shutdown function it is essential to install our software:

1. Please install program "IP9258service.exe" into the PC that will be controlled.
2. Documents created in programs like Microsoft office will not be automatically saved. The 9258 will still shutdown the controlled PC/server without saving the file.
3. You will need to reserve enough time for controlled PC/Server to shutdown after receiving a command from the 9258. Please set the delay time at 30 or 60 second in 9258 configuration webpage (setup --> **delay switch**).

4. The controlled PC/Server must be in the same ETHERNET and the same SUBNET as the 9258.

Installing and Setup of the "IP9258service.exe":

1. Insert the CD that came with the device into the PC that you want to be able to turn off.
2. On the left hand side click on the  icon.
3. Go to the 9258 Series section and click on the Link that says Shutdown Program
4. Save to your desktop and double click "IP9258config.exe" to install the program:



5. Please fill correct information in each section :

- * **IP9258 Address:** Please type in the IP address of the 9258.
- * **Http Port:** Fill the port of 9258, default value is 80, if amend the port in 9258 please correct.
- * **UserName:** admin
- * **Password:** 12345678 (password can amend in web page)

* **Power Number:** Please enter the power number in the 9258 that you want to control (If many PC/Server use same power extended line, the extended line connect to channel 1 of 9258 and if all the PC / Server set as channel 1 and same IP address in IP9258service.exe , then all the PC/Server will be controlled at same time).

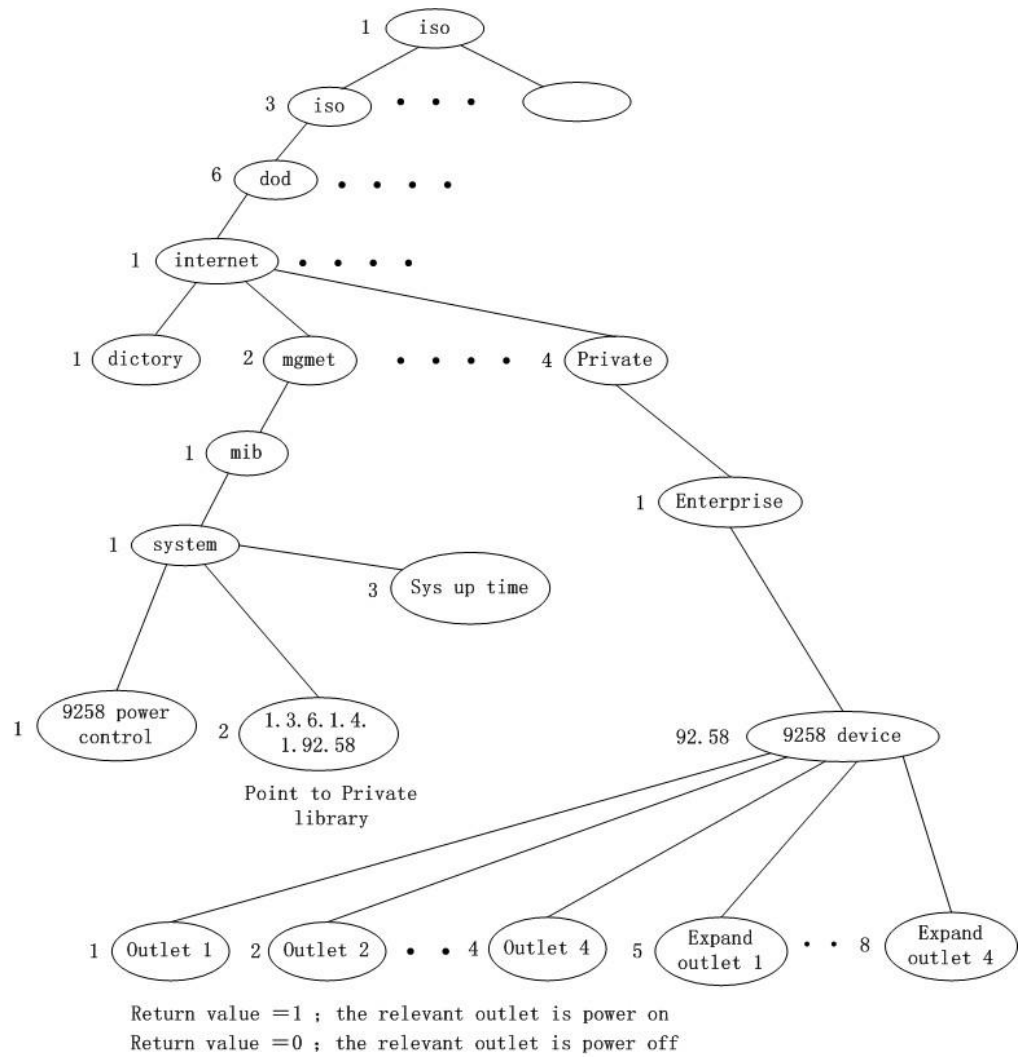
- a.) Click on “**Save Change**”.
- b.) Then Click “**InstallService**”
- c.) Then “**StartService**” then please shutdown the PC/Server.

After the PC has been restarted, the function will be in effect.



8. SNMP – MIB Tree

9258 support SNMP V1 and V2 , user can use snmp program to get the status of each port in 9258. We also supply standard MIB tree . Please contact with your distributor for the information.



9. HTTP Command & TELNET

CGI / HTTP Commands

Http commands allow you to control the device with commands. The basic commands are provided below.

There are two ways to input http commands with authorization required

* Password in http: for Browser IE 7.0 or below

<http://login:password@ipaddr:port/set.cmd?cmd=command>

* Password not in http: for Browser IE 7.0 and higher

<http://ipaddr:port/set.cmd?user=login+pass=password+cmd=command>

Note: If you use the password not in http: command you will need to enter it when the browser asks for the password.

a.) Set Power Command

The Set Power command allows you to control the devices on/off through the http commands. With this command you can integrate can integrate the 9258xx with any other system.

Command format:

<http://ip:port/set.cmd?cmd=setpower+p61=1+p62=0+p63=1+p64=1>

Outlet	Power On	Power Off
Output 1	61 = 1	61 = 0
Output 2	62 = 1	62 = 0
Output 3	63 = 1	63 = 0
Output 4	64 = 1	64 = 0

Ex. For 4 Ports Control On / Off

<http://192.168.1.3/set.cmd?cmd=setpower+p61=1+p62=0+p63=1+p64=1>

Output: p61=1 p62=0 p63=1 p64=1

Ex. For Single Port Control Off

<http://192.168.1.3/set.cmd?cmd=setpower+p61=0>

Output:P61=0

b.) Read Power Command

1. Set Port On/Off

<http://192.168.1.3/set.cmd?cmd=setpower+p61=1> (relay open) , setpower+p61=0(relay closed)

P61=1

2. Read Port

<http://192.168.1.3/set.cmd?cmd=getpower>

P61=1

c.) Power Delay

The Power delay command allows you to delay the set power command.

Command format :

`http://ip:port/set.cmd?cmd= setpower+p6x=?+p6xn=?+t6x=aa`

x means output number : 1 or 2 or 3 or 4

? means on or off : 1 = on , 0 = off

p6xn means 2nd action of output x

t6x=aa means delay aa seconds between the 2 actions

(aa range = 1 - 9999 seconds)

Ex. Turn ON Output #1 for 30 Seconds then turn Off

`http://192.168.1.3/set.cmd?cmd=setpower+p61=1+p61n=0+t61=30`

Ex. Turn ON all 4 ports for 15 Seconds then turn Off

`http://192.168.1.3/set.cmd?cmd=setpower+p61=1+p61n=0+t61=15+p62=1+p62n=0+t62=15+p63=1+p63n=0+t63=15+p64=1+p64n=0+t64=15`

(there is no space between command)

d.) Read Schedule

Command: per command of each schedule status

[http://ip:port/set.cmd?user=admin+pass=12345678+cmd=getschedule+power=xx,](http://ip:port/set.cmd?user=admin+pass=12345678+cmd=getschedule+power=xx)

xx means Schedule item number : 1a, 1b, 2a, 2b, 3a, 3b, 4a, 4b

One command to get one schedule status.

e.) Setup Schedule

Command format: One command to set one schedule status.

<http://ip:port/set.cmd?user=admin+pass=12345678+cmd=setschedule+power=xx+yy=2006+mm=02+dd=16+hh=06+mn=02+ss=16+param=128+onoff=1>

Parameter definition :

xx means Schedule item number : 1a, 1b, 2a, 2b, 3a, 3b, 4a, 4b

yy=2006 (Year 2006)

mm=02 (Month as February)

dd=16 (Date as 16)
hh=06 (Hour as 06:00am)
mn=02 (Minute)
ss=16 (Second)

param=000 disable
param=128 just once
param=255 every days
param=159 work day
param=224 weekend
param=137 mon&thu
param=146 tue&fri
param=164 wed&sat

onoff=0 off
onoff=1 on

f.) Read current value

- <http://ip:port/set.cmd?user=admin+pass=12345678+cmd=getcurrent>

TELNET

The 9258 supports telnet protocol and can be controlled in a telnet enabled environment.

To Login to the 9258 in telnet

1.) Make sure to go to command prompt and type in Telnet and the IP Address of your 9258 device.



```
G:\>telnet 192.168.1.153
9258Ntelnet command shell
Please input username and password!
9258Ntelnet-> admin:12345678
```

2.) Then type in the login and password in the following format.
admin:12345678

Telnet Commands

Help: The help command will provide all the commands available on the 9258. To get the commands in help type: help in the telnet protocol.

```

Telnet 192.168.100.24
9258Telnet command shell
Please input username and password!
9258Telnet-> admin:12345678

User name or password error!
9258Telnet-> admin:12345678

Username and password is ok!
Type 'help' and return for help
9258Telnet-> setport p6=4-1
p6=4,3,2,1
9258Telnet-> getpower
Power Status[4]: 0 0 0 0
9258Telnet-> setpower p6=1111

Power Status[4]: 1 1 1 1
9258Telnet-> setpower p6=xxxx

Power Status[4]: 1 1 1 1
9258Telnet-> getpower
Power Status[4]: 1 1 1 1
9258Telnet-> setport p6=1-4
p6=1,2,3,4
9258Telnet-> getpower
Power Status[1]: 1 1 1 1
9258Telnet-> setpower p6=0000

Power Status[1]: 0 0 0 0
9258Telnet-> setpower p6=xxxx

Power Status[1]: 0 0 0 0
9258Telnet-> getpower
Power Status[1]: 0 0 0 0
9258Telnet-> █

```

Set power: The set power command allows the device to turn on and turn off ports on the device. To set power on the device type

```

9258Telnet-> setpower p6=1111
Power Status : 1 1 1 1

9258Telnet-> setpower p6=0000
Power Status : 0 0 0 0

```

For example : The default status of each port are all OFF.

Telnet Command	Port 4	Port 3	Port 2	Port 1
setpower p6=1111	On	On	On	On
setpower p6=0000	Off	Off	Off	Off
setpower p6=0101	Off	On	Off	On
setpower p6=1010	On	Off	On	Off
setpower p6=xxxx	Off	off	off	off

1 : on
0 : off
x : ON/OFF status No change (x as lower case)

Get power: The get power command gives you the current status of the device. To get power on the device type:

```
9258Telnet-> getpower
Power Status : 1 1 1 1
```

When get power is typed all 4 ports will show whether the ports on on/off using 1's and 0's.

Setport : user can change the sequence of port action / read status display as 4-3-2-1 (default) or 1-2-3-4 .

```
setport p6=1-4    {outlets sequence 1234}
```

```
setport p6=4-1    {outlets sequence 4321}
```

10. FAQ

Q1: I forgot the password and can not enter the administration page now, what can I do?

A1: Use username "**super user**" when log in webpage and then click "**OK**" turn power off for few second and then turn on **ON** . 9258 will to set back to default password. (There is space between super and user.)

Q2: Why does the on/off operation can not work immediately?

A2: If you operate the IP Power 9258 in a LAN environment, the operation will work immediately and smoothly. But ff you operate it through the Internet, the response time depends on the situation of the network and the speed of your internet.

Q3: What if the update fails and I cannot find the device in IP Edit anymore?

A3: Refer to page 30 of the manual for instructions on how to reupdate.

Q4: I can not get the 9258's IP by your software "IPEDIT"

A4:

Please refer the following possible parts for this 9258S not been searched by IPEDIT

1. Boot up successfully : Please reboot the 9258 and check if there are 1 short beep after 3 seconds . This beep means the device boot up successfully . If not , the device may have issue.
2. Network card : Please check if there are more than two network card – include wire / wireless / dynamic - in the PC which used IPEDIT software . IPEDIT only support single network PC , please disable the other network connection / functions.
3. Anti Virus software / Firewall : Please turn off the antivirus software firewall temporary.
4. Power : If there is no power go to 9258 , please check the fuse part . There will be no power for 9258 if the fuse buttons is pop up - not easy/flexible to press as it was – by over loading for long time , please press the fuse back and the power will go to 9258 to boot up .
5. Connection : Please make sure that the 9258 is under same router with the PC used IPEDIT . It is fine to connect across multiple routers but it need to setup the MASK part which need some knowhow .

Q5 : How to enable NTP function ?

A5 : To work NTP , please do connect to Internet and 9258 will auto connect to NTP server.

1. Save : Save the setting & Disable NTP function .
2. NTP : Enable NTP function.
3. Local time : Use the local time of the controlled PC & Disable NTP function .

Please refer the picture of the NTP page buttons functions :

1. **Save : Save the setting & Disable NTP function .**
2. **NTP : Enable NTP function.**
3. **Local time : Use the local time of the controlled PC & Disable NTP function .**

● NTP setting procedure :

Step 1 : Fill the IP of the NTP server and also the time zone . About TIME ZONE : If in JAPAN , please fill 7 in the section . If in Taiwan , please fill 8 .

Press "SAVE " to save the setting

Step 2 : Press " NTP " buttons to enable the NTP function.